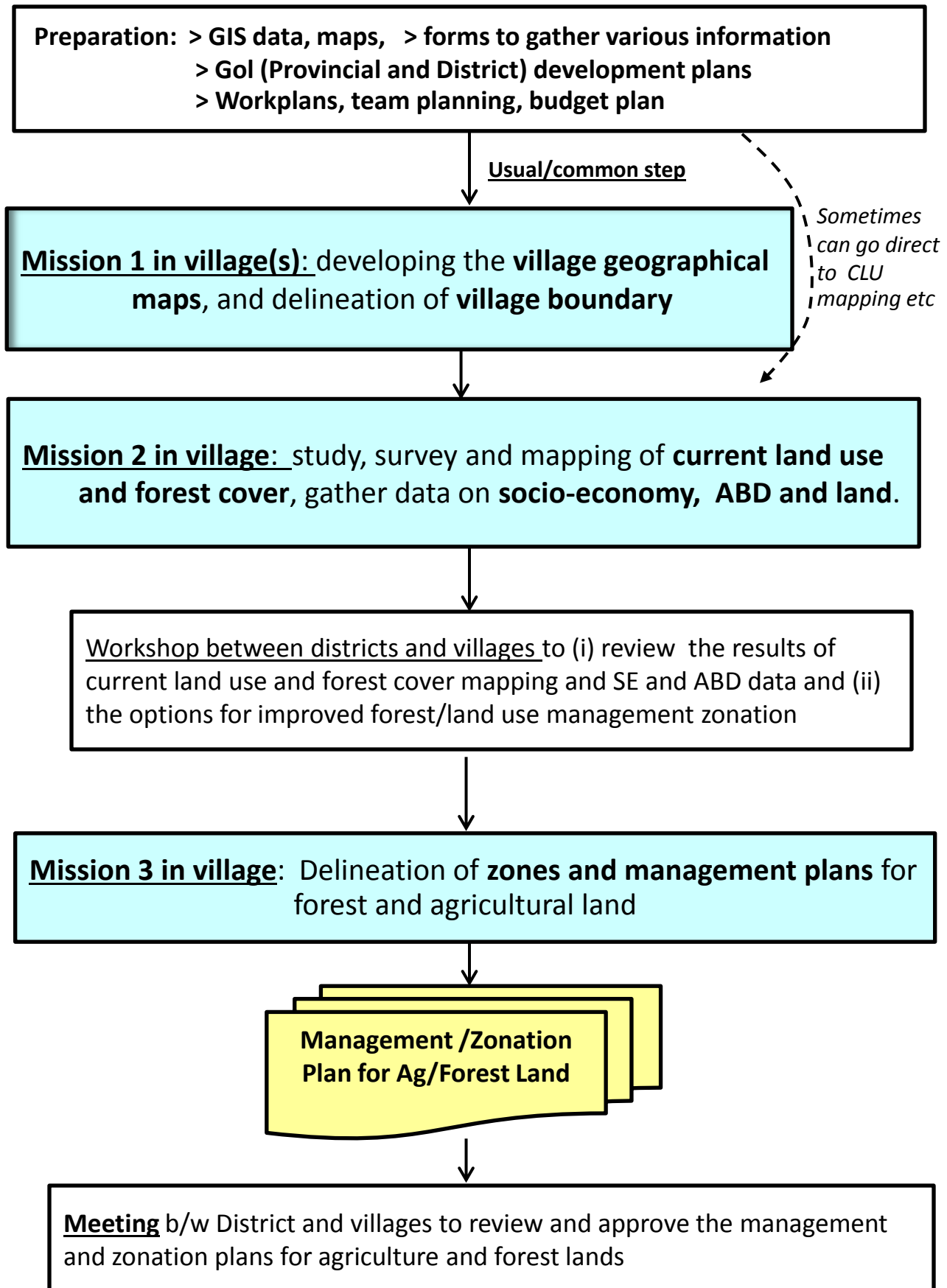


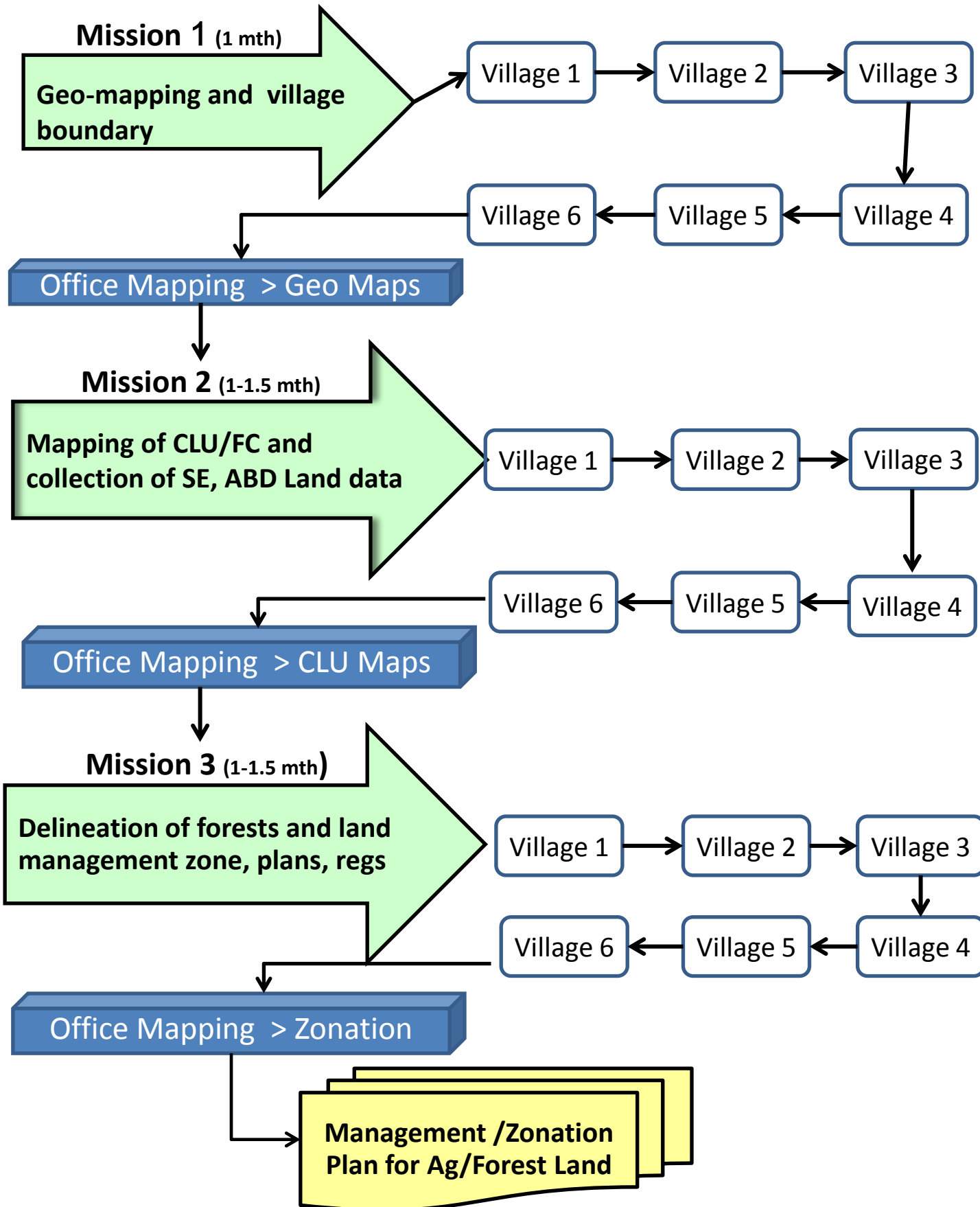
**Participatory Forest and
Land Use Planning
(pFLUP)**

**Participatory Forest and
Land Use Planning,
Allocation and Management
(pFLUPAM)**

1: Main steps of pFLUP



2. the Process of Working with a Group or Cluster of villages (in the case that a cluster has 6 villages)



3: the Main steps in Mapping

Mapping in Office

Satellite mage without any geo info



Top map from 1980, no recent geo info, 2.5D



Geomap, with village boundary, on SIM base



Geomap, with village boundary, Topo base



Mapping in Village

Village mission 1 : making of geomaps and delineation of village boundary

➤ **Development of Geo-Map:**

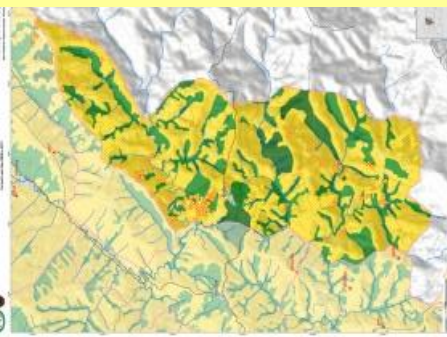
- River stream networks, names
- Hill-tops etc, and names
- Mapping of tracks, etc
- Mapping any other features

➤ **Process to define Village boundary**

Village mission 2: develop a current land use and forest cover map, with villagers

- Delineate forest/other area never cleared
- Mapping of fixed agriculture lands
- Mapping of upland fields: as visible on year if SIM, 2 other years (PIN method)
- Survey and take soils samples

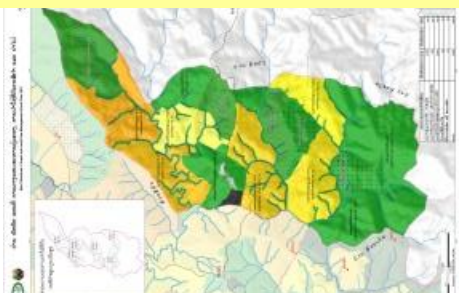
Map of current land use and forest cover, as developed with villages



F3. Workshop: Districts - Village clusters - Villages

- Review current forest and land use and problems re land use etc
- Review options for improved land use and land and forest management zonation
- Develop consensus regarding the general strategy to improve forest and land zonation

Map of (improved) forest and land use management zones, developed with vills



Village mission 3: delineation of improved forest and land use zones (FLUMZ Plan)

Approval of the FLUMZ plan by District

Process towards issuance of community land titles

1

2

3

4

5

6

7

8